



## HOW TO MEASURE FOR YOUR KITCHEN

Five Star Kitchens provides custom kitchens & baths, without the custom cost. It would be our privilege to connect you with one of our talented design professionals to create the home of your dreams.

We ask that you provide us with some basic measurements of your space to begin the design process. Don't worry, if your measurements are slightly off, it will not negatively affect your design in this stage of the project. Eventually, we will ensure measurements are 100% accurate by sending a professional to verify measurements!

Please utilize the guide below to give us measurements for your initial design! Feel free to send us measurements any way you can! In addition, please take pictures of each wall and include them with your measurements. Scan or take pictures and send them to:

**Email:** [Design@fivestarkitchens.com](mailto:Design@fivestarkitchens.com)

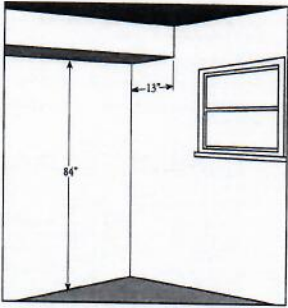
**Text:** (516) 350-8053

### MEASURING GUIDE

- Remember to attach any helpful pictures of your space! Also, feel free to send any inspiration pictures as well!
- Write down measurements for each appliance in your kitchen:

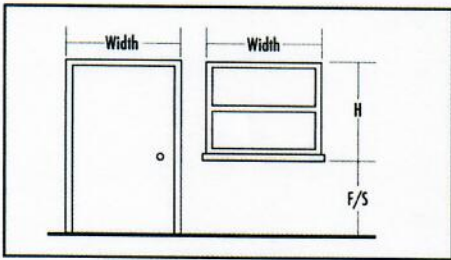
Appliance	Width	Height	Depth
Dishwasher			
Range			
Microwave			
Refrigerator			
Other:			
Other:			

3. Using the example below, what is the height of your area from floor to ceiling, or from floor to soffit?



My area height is \_\_\_\_\_ from floor to ceiling.  
 My area height is \_\_\_\_\_ from floor to soffit.  
 My soffit depth is \_\_\_\_\_.

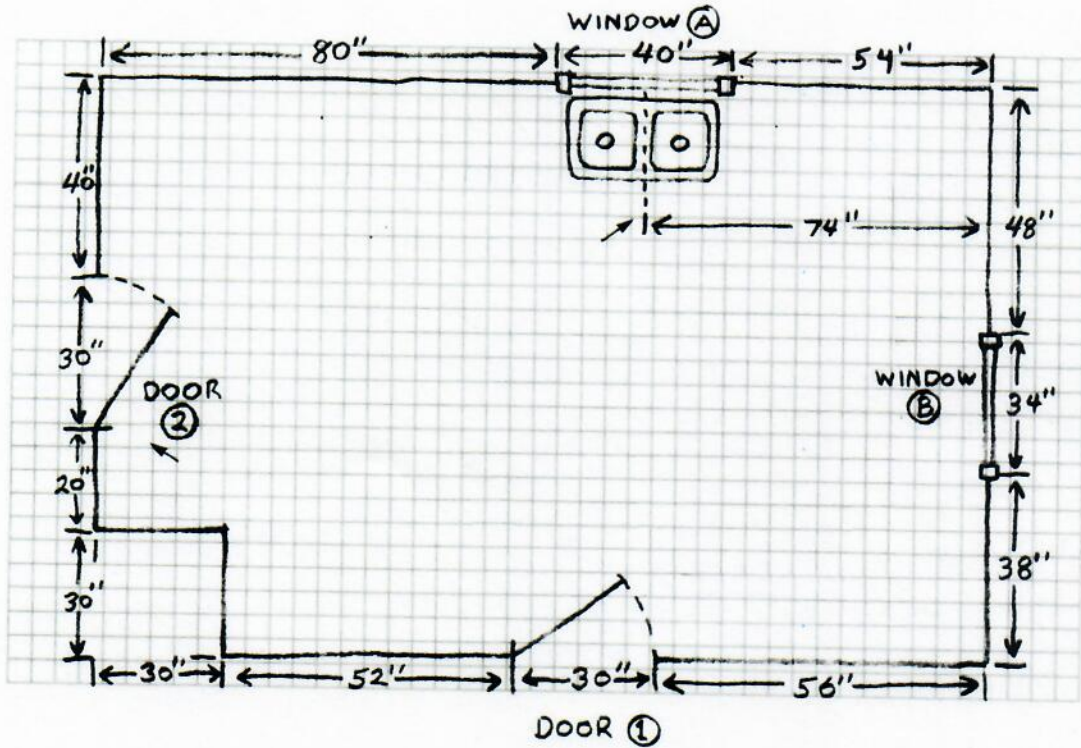
4. Using the example below, write down the measurements of the windows and doors in your room. Be sure to measure from the outside of trim to the outside of trim.



Windows	Width	Height	Distance From Floor to Trim
Window 1			
Window 2			
Window 3			
Window 4			

Doors	Width	Height
Door 1		
Door 2		
Door 3		
Door 4		

5. Use the example below to make a sketch of your room including wall measurements, any windows or doors, and anything that can't move such as gas or plumbing.



Your drawing does not have to be to scale, but please include as many measurements as you can.

